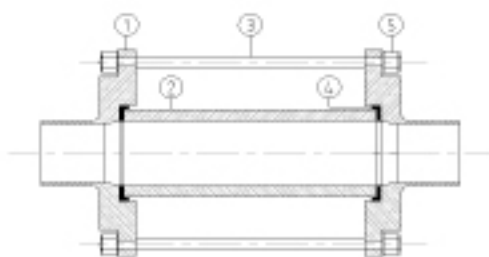


HYGIENIC SIGHT GLASS



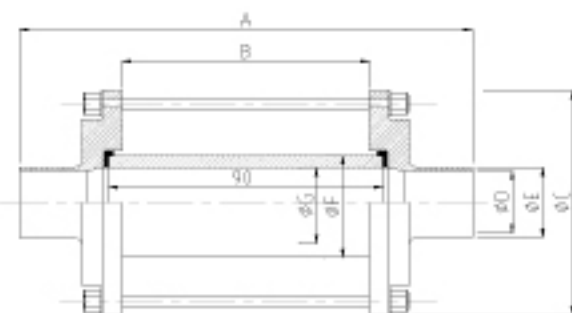
NO.	NAME
1	BODY
2	HIGH PRESS CLEAN GLASS
3	SCREW BOLT
4	NYLON LOCK NUT
5	SEAL

GLASS : CLEAN, HIGH PRESS GLASS. MAX WORK 10 BAR. CAN BE USE.

BODY : SS 304, 316L PRECISION MACHINED BODY. WITH WIDH CONNECTION END 3A, DIN, SMS, RJT, IDF MALE/MALE. WELD AND FEMALE END.

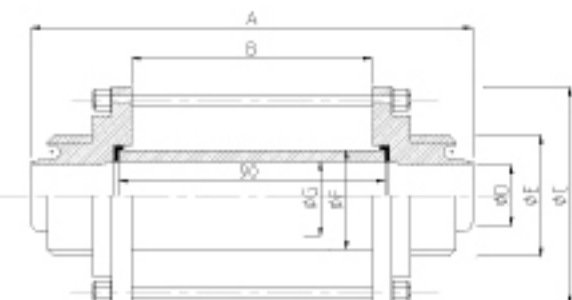
SCREW BOLT : FULL STAINLESS STEEL.

SEAL : EPDM, SILICONE AND VITON.



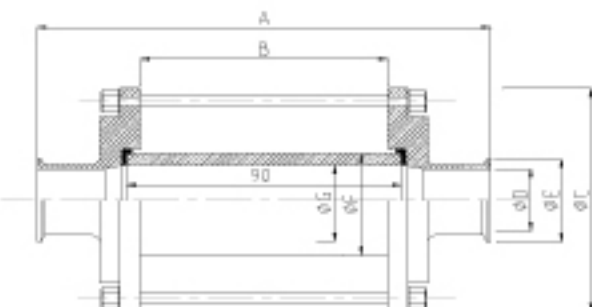
SMS Weld End Sight-Glass

Size	A	B	C	D	E	F	G
25	150	82	79	22.5	25	32	26
38	158	82	85	35.5	38	40	34
51	162	82	105	48.4	51	60	50
63.5	162	82	112	60.4	63.5	75	65
76	164	82	125	72.7	76	85	75.4
104	170	82	157	99.88	104	110	100



RJT, SMS, DIN, IDF-Male End Sight-Glass

Size	A	B	D	F	G
1.0"	150	82	79	32	26
1.5"	158	82	85	40	34
2.0"	162	82	105	60	50
2.5"	162	82	112	75	65
3.0"	164	82	125	85	75.4
4.0"	170	82	157	110	100



Clamp End Sight-Glass

Size	A	B	C	D	E	F	G
1.0"	145	82	79	22.1	50.5	32	26
1.5"	153	82	85	34.7	50.5	40	34
2.0"	157	82	105	47.6	64	60	50
2.5"	157	82	112	60.2	77.5	75	65
3.0"	159	82	125	72	91	85	75.4
4.0"	165	82	157	97.6	119	110	100