

FITTINGS FOR SANITARY APPLICATIONS

Tube

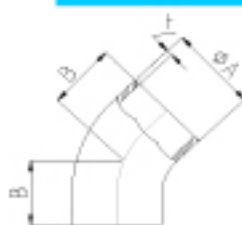


SIZE | THICKNESS

25.4	1.2, 1.5
38.1	1.2, 1.5, 1.65
50.8	1.2, 1.5, 1.65
63.5	1.5, 1.65, 2
76.2	1.5, 1.65, 2
101.6	1.5, 1.65, 2

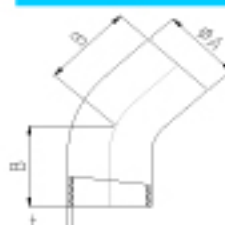


45° Short Bend



Size	A	B	T
1.0'	25.4	15.8	1.65
1.5'	38.1	23.8	1.65
2.0'	50.8	31.75	1.65
2.5'	63.5	39.6	1.65
3.0'	76.2	47.6	1.65
4.0'	101.6	63.5	2.10

45° Long Elbow



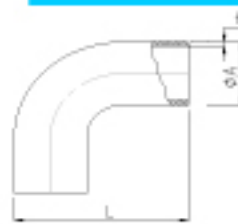
Size	A	B	T
1.0'	25.4	30.2	1.65
1.5'	38.1	41.3	1.65
2.0'	50.8	58.7	1.65
2.5'	63.5	76.2	1.65
3.0'	76.2	93.7	1.65
4.0'	101.6	122.2	2.1

90° Short Bend



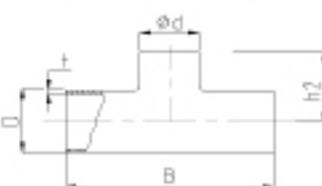
Size	D	L	T
1.0'	25.4	38.10	1.65
1.5'	38.1	57.20	1.65
2.0'	50.8	76.20	1.65
2.5'	63.5	95.25	1.65
3.0'	76.2	114.30	1.65
4.0'	101.6	152.40	2.10

90° Long Bend



Size	D	L	T
1.0'	25.4	52.4	1.65
1.5'	38.1	74.6	1.65
2.0'	50.8	103.2	1.65
2.5'	63.5	131.8	1.65
3.0'	76.2	160.3	1.65
4.0'	101.6	211.1	2.1

EQUAL TEE



Size	T	L	L2	H	h2
25.4	1.5	95.2	95.2	15	47.2
38.1	1.5	114.4	114.4	21	57.2
50.8	1.5	152.4	152.4	29	76.2
63.5	1.5	152.4	152.4	36	76.2
76.1	2	165.2	220	44	110
101.6	2	196.8	300	58	150

PULLED TEE

